

# Solent Airport, Daedalus

Airside driving (West)

# Aim

To provide persons driving airside at Solent Airport, Daedalus with a knowledge of the potential hazards they may encounter and the correct procedures to follow to ensure flight safety is maintained.

# Daedalus West access

Access to businesses or private hangars situated on the Western side of the Airfield is made through the West gate.

The West gate operates an automatic number plate recognition (ANPR) system for authorised vehicles.



# Daedalus West access

Unauthorised persons and vehicles will require an escort from the host at all times whilst on site, including to and from the gate. These can be contacted via the intercom situated on the gate.

For ANPR access please ask your host/employer for the relevant application form, which will be submitted to the Airfield authority for approval.



# Daedalus West ANPR access

Once the application for ANPR access has been approved the vehicle details will be inputted into the system.

Please note the following steps to ensure you are familiar with the process of gaining access.



# Daedalus West ANPR access

Approach the West gate slowly.



STOP on the stop line.



# Daedalus West ANPR access

Wait for gate to fully open.



Proceed through the gate, then wait for it to close behind you to ensure no unauthorised vehicles tail gate through.



# Daedalus West

Once you have entered through the gate **you are now on an active airport**. The following rules **MUST** be obeyed at all times.



# Daedalus West speed limit

The site speed limit at all times and in all places is 20mph.



# Highway code

The highway code applies at all times whilst driving on site.

Mobile phone use whilst driving is strictly prohibited.



# Vehicle lighting

Dipped beam headlights should be used at all times.

Hazard lights and obstruction lights (when fitted) must also be used at all times when driving on site.

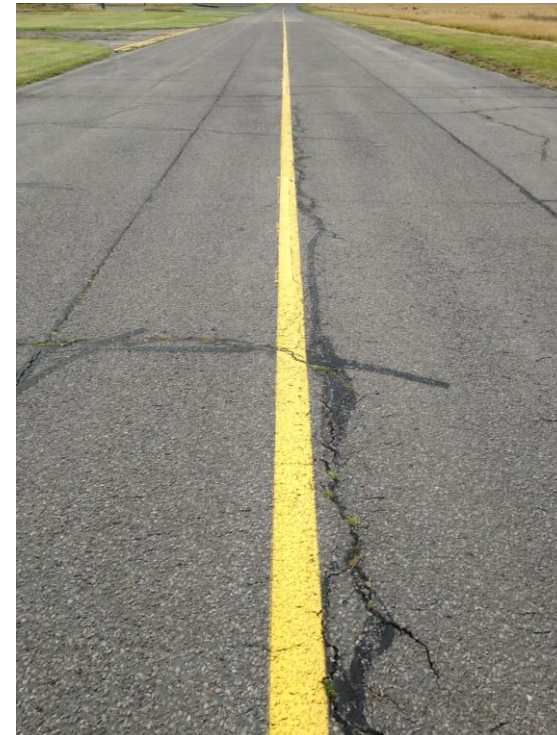


# Airfield Taxiways

When driving on the Airport you will at times drive on an Aircraft taxiway.

The taxiway is easily identified by the solid painted yellow centreline running down the middle of it.

Aircraft use taxiways to transit around the Airport.



# Joining a taxiway

When entering from West gate you will join a taxiway at a T junction. Ensure your hazard lights and dipped beams are on by this point.



Ensure you STOP at the stop line and have a visual check both ways to ensure no aircraft are taxiing past before entering the taxiway.



# Aircraft have absolute right-of-way

Aircraft have absolute right of way at all times.

If an aircraft approaches please find a suitable location to pull over and stop to allow the aircraft to pass.



# Giving way to Aircraft

Give way to aircraft by safely pulling over in a suitable location and stop to allow the Aircraft to pass. Note the wing tips may overshoot the taxiway, safe clearance should be given to Aircraft at all times.



# Helicopters

Some rotary traffic may be hover taxiing. Do not drive underneath them.

Helicopters produce a lot of downwash from their rotor blades. Remain well clear at all times.





# Emergency Vehicles

Emergency vehicles responding to an emergency and operating their emergency lighting shall have right-of-way over all other ground vehicles.



# FOD

## FOREIGN OBJECT DEBRIS

FOD is everybody's responsibility. If seen please pick it up if safe to do so.

If it is unsafe to do so, contact Daedalus Operations via radio or telephone 01329 824749 and report it.



# Taxiway hold points

This is a taxiway hold point.

It is a holding point for Aircraft before entering the runway for departure.

**On no account should vehicles cross this point without communicating with the Control Tower.**



# Identifying taxiway hold points

Hold points can be identified by the double solid line followed by a double pecked line painted horizontally across the taxiway.



The hold point will be flanked both sides by signs indicating the hold point designator (D1) and the runway beyond it (23).



# Parking

Your host/employer will explain where a safe place to park on their demise is.

Please ensure you do not park in the close vicinity of Aircraft or obstruct Aircraft manoeuvring areas.



# Breakdown procedure

In the event of your vehicle breaking down whilst on site please try and stop in an area not obstructing other traffic / aircraft.

Contact Airport Operations

01329 824749

If unable to contact, flash lights towards the control tower and await assistance.



# Fuel bowzers

Numerous fuel bowzers operate around the site. Please be aware of them and the highly flammable fuels they contain. Do not park in close proximity to them and allow a wide clearance when passing. Especially when they are conducting refuelling operations.



# Contractors

Numerous contractors operate at Daedalus. These vary from grass cutting to construction workers. Please keep a good visual look out for them at all times.





# Operations team

If in any doubt contact the  
Operations Team.

01329 824749

[ops@solentairport.co.uk](mailto:ops@solentairport.co.uk)



# Solent Airport, Daedalus

Airside driving (West)